

SP-800P POWERED SPEAKERS

OWNERS MANUAL




www.visionaudiovisual.com/techaudio/sp-800p/

DECLARATION OF CONFORMITY


Where applicable Vision products are certified and comply with all known local regulations to a 'CB Certification' standard. Vision commits to ensure all products are fully compliant with all applicable certification standards for sale in the EU and other participating countries.

The product described in this owner manual is in compliance with RoHS (EU directive 2002/95/EC), and WEEE (EU directive 2002/96/EC) standards. This product should be returned to the place of purchase at the end of its useful life for recycling.


WARNINGS




CAUTION
RISK OF ELECTRIC SHOCK
DO NOT OPEN



CAUTION: TO REDUCE THE RISK OF ELECTRIC SHOCK DO NOT REMOVE COVER (OR BACK). NO USER-SERVICEABLE PARTS INSIDE. REFER SERVICING TO QUALIFIED SERVICE PERSONNEL.



The lightning flash with arrowhead symbol, within an equilateral triangle, is intended to alert the user to the presence of uninsulated "dangerous voltage" within the product's enclosure that may be of sufficient magnitude to constitute a risk of electric shock to persons.



The exclamation point within an equilateral triangle, is intended to alert the user to the presence of important operating and maintenance (servicing) instructions in the literature accompanying the appliance.

WARNING: TO REDUCE THE RISK OF FIRE OR ELECTRIC SHOCK, DO NOT EXPOSE THIS APPLIANCE TO RAIN OR MOISTURE.

All products are designed and imported into the EU by 'Vision' who is wholly owned by 'Azlan Logistics Ltd.', Registered in England Nr. 04625566 at Lion House, 4 Pioneer Business Park, Clifton Moor, York, YO30 4GH. WEEE Registration: GD0046SY



DECLARATION OF ORIGIN

All Vision products are made in the People's Republic of China (PRC).

USE ONLY DOMESTIC AC OUTLETS

Connecting the unit to an outlet supplying a higher voltage may create a fire hazard.

HANDLE THE POWER CORD WITH CARE

Do not disconnect the plug from the AC outlet by pulling the cord; always pull the plug itself. Pulling the cord may damage it. If you do not intend to use your unit for any considerable length of time, unplug the unit. Do not place furniture or other heavy objects on the cord, and try to avoid dropping heavy objects on it. Do not tie a knot in the power cord. Not only could the cord be damaged, but a short circuit could also be caused with a consequent fire hazard.

PLACE OF INSTALLATION

Avoid installing this product under the following conditions:

- Moist or humid places
- Places exposed to direct sunlight or close to heating equipment
- Extremely cold locations
- Places subject to excessive vibration or dust
- Poorly ventilated places

Do not expose this product to dripping or splashing. **DO NOT PLACE OBJECTS FILLED WITH LIQUIDS ON OR NEAR THIS PRODUCT!**

MOVING THE UNIT

Before moving the unit, be sure to pull out the power cord from the AC outlet and disconnect the interconnection cords with other units.

WARNING SIGNS

If you detect an abnormal smell or smoke, turn this product off immediately and unplug the power cord. Contact your reseller or Vision.

PACKAGING

Save all packing material. It is essential for shipping in the event the unit ever needs repair.

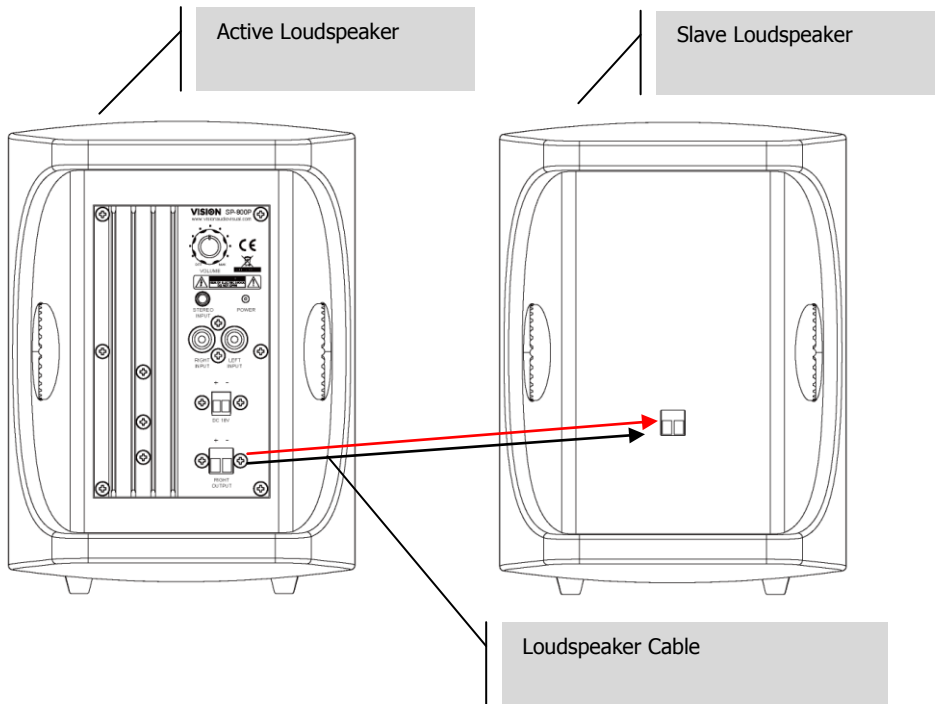
IF ORIGINAL PACKAGING IS NOT USED TO RETURN THE UNIT TO THE SERVICE CENTRE, DAMAGE IN TRANSIT WILL NOT BE COVERED BY WARRANTY.

WATTS

The most consistent standards for measuring watts are "Program Power" and "RMS" because these measure average sustained levels.

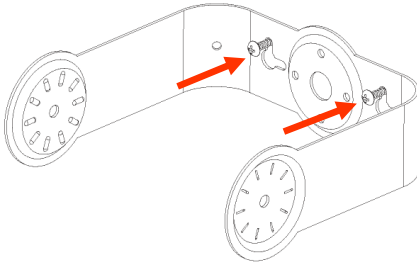
Where loudspeakers have integrated amplifiers, then load (resistance, measured in ohms) is known so the wattage rating is fixed.

CHASSIS



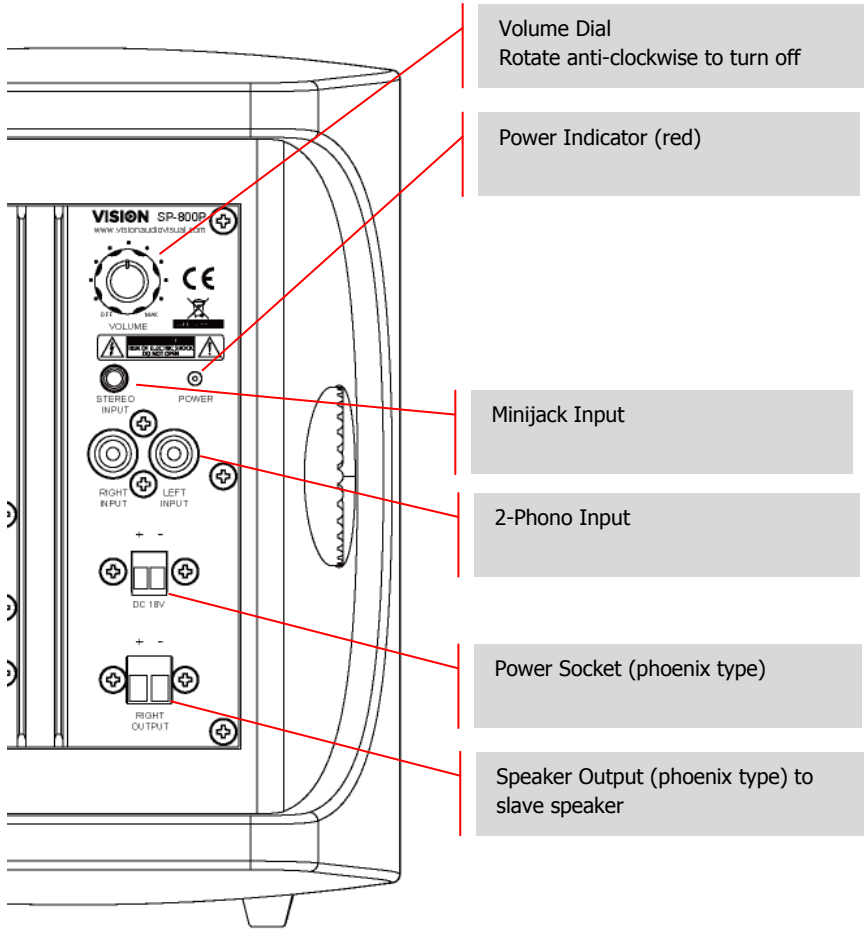
INSTALLATION

1. **FIT BRACKETS TO WALL** Position brackets over load-bearing studs and use appropriate screws to fix to wall or ceiling.

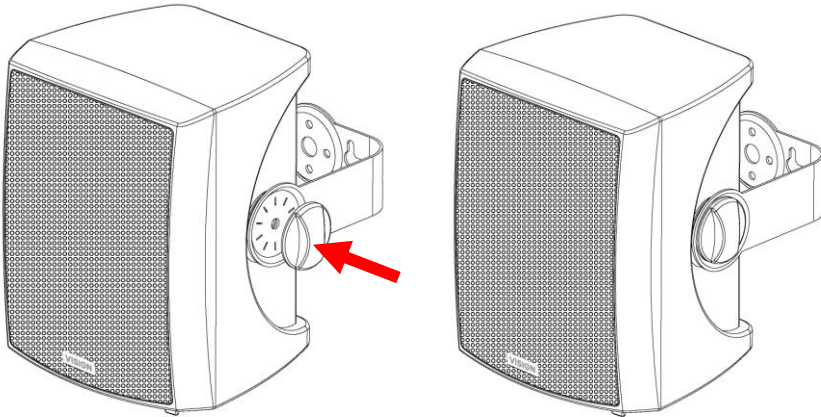


2. **INSTALL POWER AND INPUT CABLE** Run power and input cable from source positions to the master.
3. **INSTALL SPEAKER CABLE** Run included speaker cable between speaker brackets. If cable too short use unshielded speaker cable with gauge of 0.75mm or higher.

4. CONNECT LOUDSPEAKERS With mains power source off, connect cables to speakers.



5. FIX LOUDSPEAKERS TO BRACKETS



NOTE: Ensure adequate airflow around heatsink on master speaker. It should not be touching anything.

6. ACTIVATE POWER Ensure volume dial is fully anti-clockwise to off position, then turn mains power on.

NOTE: Inputs 1 and 2 are both 'on' all of the time. There is no switching circuit.

Update 8th Apr 2016: on the first batch if anything is plugged in to the Minijack input the phono will not work. Use a Y summing cable to bring two inputs into the Minijack input.
From Mid-July this will change to summed inputs.

TROUBLESHOOTING

If your system is not operating properly, please refer to the following information. If the problem persists, disconnect from power and contact your AV reseller immediately.

Problem	Correction
No power light	Rotate volume control clock-wise. Check power source and power input cable. Check fuse in power cable plug.
Power light on but no sound	Turn the volume dial on the master loudspeaker up. Make sure the output volume on your test device is at full and that it works through the built-in device loudspeakers.
Hum or noise	Check that all input cables shielded properly. Poor quality cable with uneven shielding which introduces noise. Make sure all source devices are connected to the same power source. If disconnecting a laptop from power solves the problem then this is definitely the cause of the problem. Try disconnecting one input. The inputs summed inside the SP-800P so are both live at the same time.
Slave loudspeaker not working or quieter	Check speaker cable to ensure there a proper connection at both ends.
Slave loudspeaker is quieter than master loudspeaker	This is typically caused by the use of incorrect cable between the master and slave loudspeakers. It is too thin, or shielded. Replace immediately.

SPECIFICATIONS

PRODUCT DIMENSIONS: 202 x 149 x 144 mm/ 7.95" x 5.87" x 5.67" (tall x wide x deep for each speaker)

PACKAGED DIMENSIONS: 370 x 170 x 220 mm / 14.6" x 6.7" x 8.7"

PRODUCT WEIGHT: 3.4 kg / 7.5 lb (per pair)

PACKAGED WEIGHT: 3.5 kg /7.7 lb (per pair)

CONSTRUCTION MATERIAL: MDF

COLOUR: White

TECHNICAL DETAILS:

Amplifier Output: 2 x 12w watts (RMS)

Woofers: 4"

Tweeter: 1.5" Silk

Input 1: Minijack (3.5mm / 0.14")

Input 2: 2-Phono (RCA)

Speaker Output: Phoenix type

Speaker Input (on slave): Phoenix type

Output Impedance: 4 ohms

Sensitivity: 85dB (1w/1m)

Frequency response: 80Hz-16kHz

ACCESSORIES INCLUDED:

2 x Wall brackets

1 x Speaker Cable 5m (16.4 ft)

Note: no input cables are included

POWER SUPPLY: 100-240v 50/60Hz AC External Power Supply – 18 volt / 1 amp

Transformer integrated into plug. Includes interchangeable plugs: UK/EU/US/AU. DC tail length: 4m. Transformer dimensions: 66 x 43 x 30mm / 2.6" x 1.69" x 1.18"

WARRANTY: Lifetime return-to-base

2 years onsite (UK only)

COMPLIANCE: RoHS, WEEE, CE/EMC, CE/LVD, FCC, SAA

LIFETIME RETURN-TO-BASE WARRANTY

This product comes with a lifetime return to base warranty. If you have a problem you are required to provide a DETAILED DESCRIPTION of the fault.

Some Vision products are very technical and require troubleshooting all elements of the installation as it may not be the Vision product at fault. Because of this the manufacturer may refuse to replace the item if an adequate description is not provided.

- This warranty applies only to the original purchaser and is not transferable.
- This warranty protects you against the following:
 - Failure of any components, including the power supply.
 - Damage when the product is first removed from its packaging if reported within 24 hours of purchase.
- If the product is DOA (dead on arrival), you have 21 days from purchase date to notify the national distributor via your AV reseller.
- The original purchaser is responsible for shipment of the product to the Vision's appointed service centre.
- The liability of Vision is limited to the cost of replacement of the faulty unit under warranty except for death or injury (EU85/374/EEC).
- If the product is end of line (EOL) the Vision will provide a credit instead of replacement.
- This warranty does not protect this product against faults caused by abuse, misuse, incorrect installation, unstable or faulty power input, or modification.

Vision aims to send a replacement item within 5 working days however this may not always be possible, in which case it will be sent as soon as practicably possible. UK End users and resellers can request support at <http://www.visionaudiovisual.com/support>

2-YEAR ONSITE WARRANTY (UK ONLY)

The manufacturer provides an onsite warranty for the first two years taken from date of sale.

This service can be requested at the url above and is provided at the manufacturer's discretion.

- This service is only provided for products which are difficult for an end user to get at and replace.
- The manufacturer will not provide the onsite service if
 - The reseller or end user has been abusive
 - The user has is taking unfair advantage of this service
- The manufacturer will pre-qualify the visit to ensure the fault relates to the Vision product.

The engineer visits are timed to ensure you are onsite and the room is accessible. A revisit WILL NOT be provided if access to the room is not provided at the arranged time. Engineers will wait 15 minutes only.

LEGAL DISCLAIMER: Because we are committed to improving our products, the details above may change without prior warning. This User Manual is published without warranty and any improvements or changes to the User Manual necessitated by typographical errors, inaccuracies of current information, or improvements to programs and/or equipment, may be made at any time and without notice. Such changes will be incorporated into new editions of the User Manual.